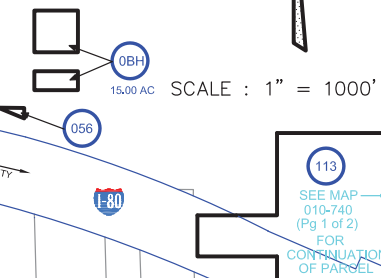
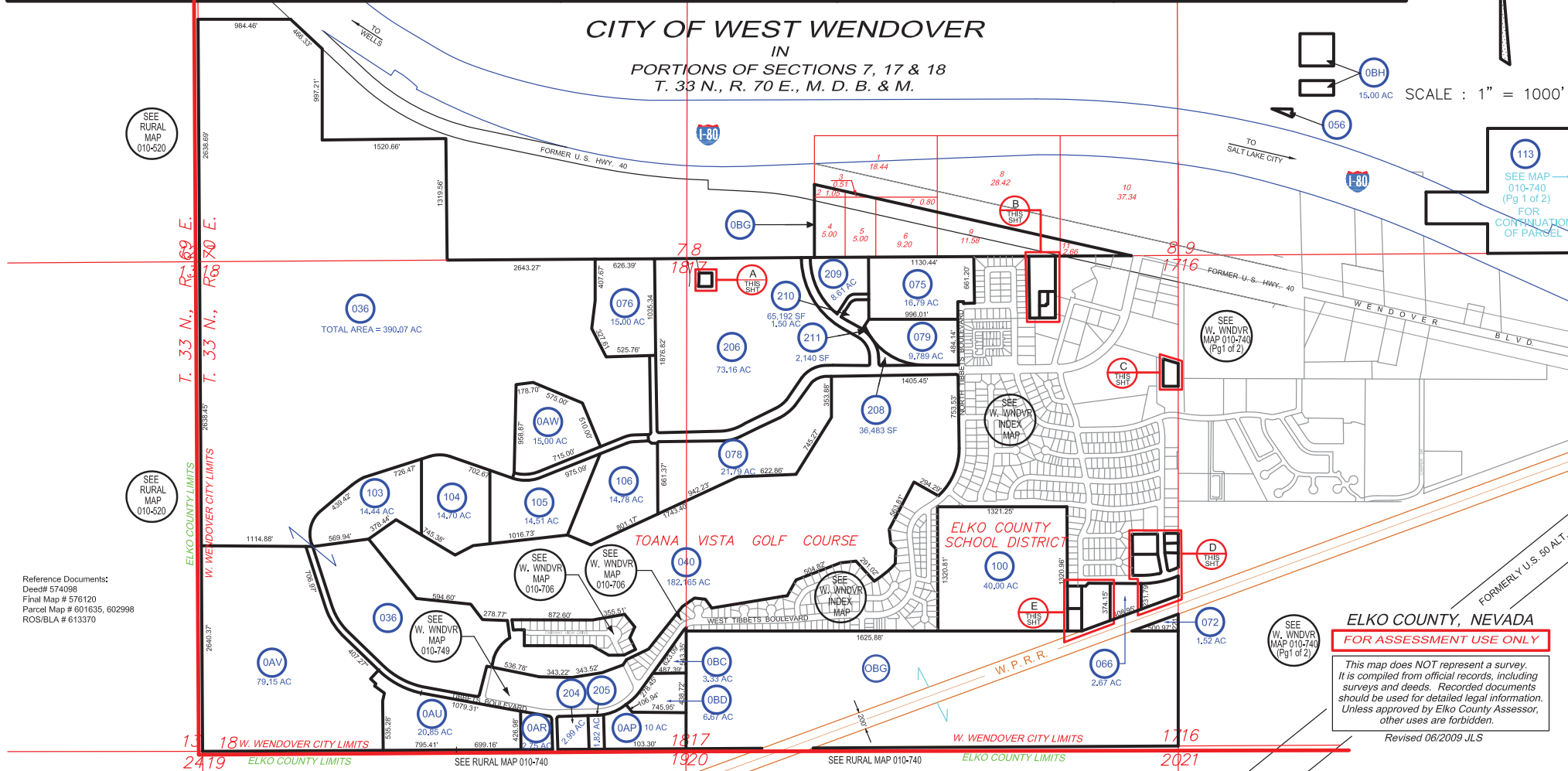


CITY OF WEST WENDOVER  
IN  
PORTIONS OF SECTIONS 7, 17 & 18  
T. 33 N., R. 70 E., M. D. B. & M.



Reference Documents:  
Deed# 574098  
Final Map # 578120  
Parcel Map # 601635, 602998  
ROS/BLA # 613370

**ELKO COUNTY, NEVADA**  
**FOR ASSESSMENT USE ONLY**

*This map does NOT represent a survey. It is compiled from official records, including surveys and deeds. Recorded documents should be used for detailed legal information. Unless approved by Elko County Assessor, other uses are forbidden.*

Revised 06/2009 JLS